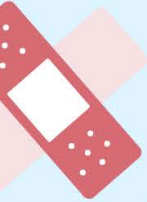




COVID Vaccine Clinic

DISABILITY ACCOMODATIONS AVAILABLE



ON-SITE ASL INTERPRETERS

ASSISTIVE TECHNOLOGY

DRIVE THROUGH ONLY EVENT

WHO

INDIVIDUALS WHO NEED TO RECEIVE THEIR COVID VACCINE, THIS CLINIC HAS DISABILITY ACCOMODATIONS AVAILABLE

WHAT

MODERNA & J&J COVID VACCINES, BRING A PHOTO ID AND YOUR INSURANCE INFO, THOUGH INSURANCE IS NOT REQUIRED

WHEN

MONDAY, MAY 24: 10AM-5PM

WHERE

BERNA FACIO DEVELOPMENT CENTER
3315 LOUISIANA BLVD NE
ALBUQUERQUE, NM 87110
DRIVE THROUGH ONLY

HOW

DROP-INS WELCOME OR REGISTER IN ADVANCE BY VISITING VACCINENM.ORG OR BY CALLING 1 (800) 432-2080



NEW MEXICO
DEVELOPMENTAL DISABILITIES
PLANNING COUNCIL